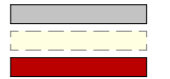


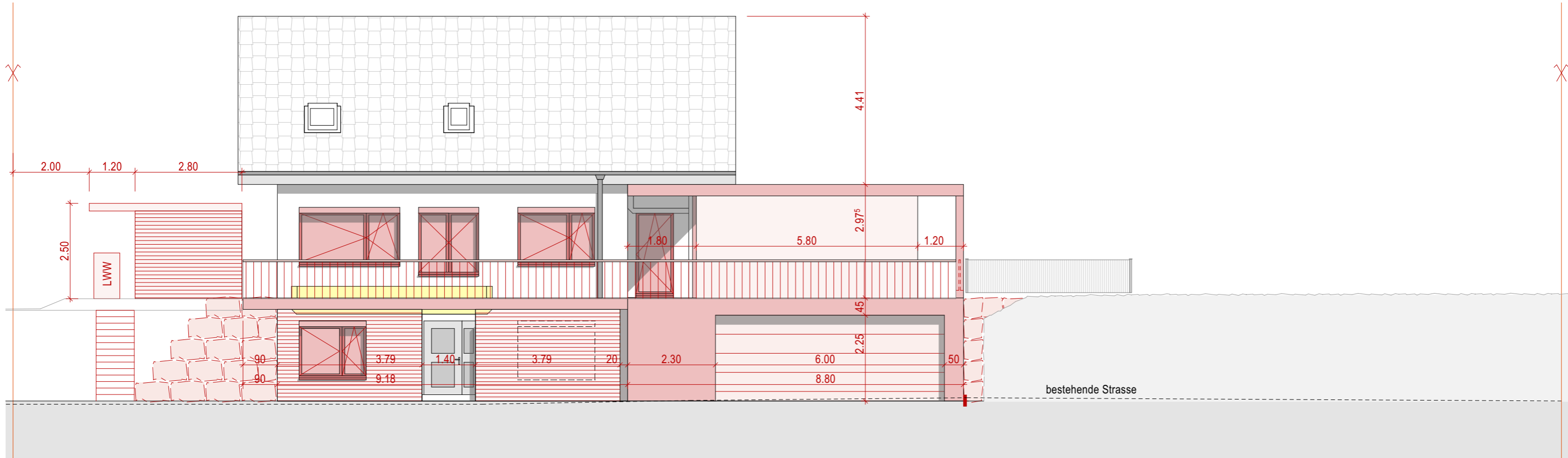
Umbau EFH Aemserestrasse 15

Andrea und Roger Wermelinger, Aemserestrasse 15, 6110 Wolhusen

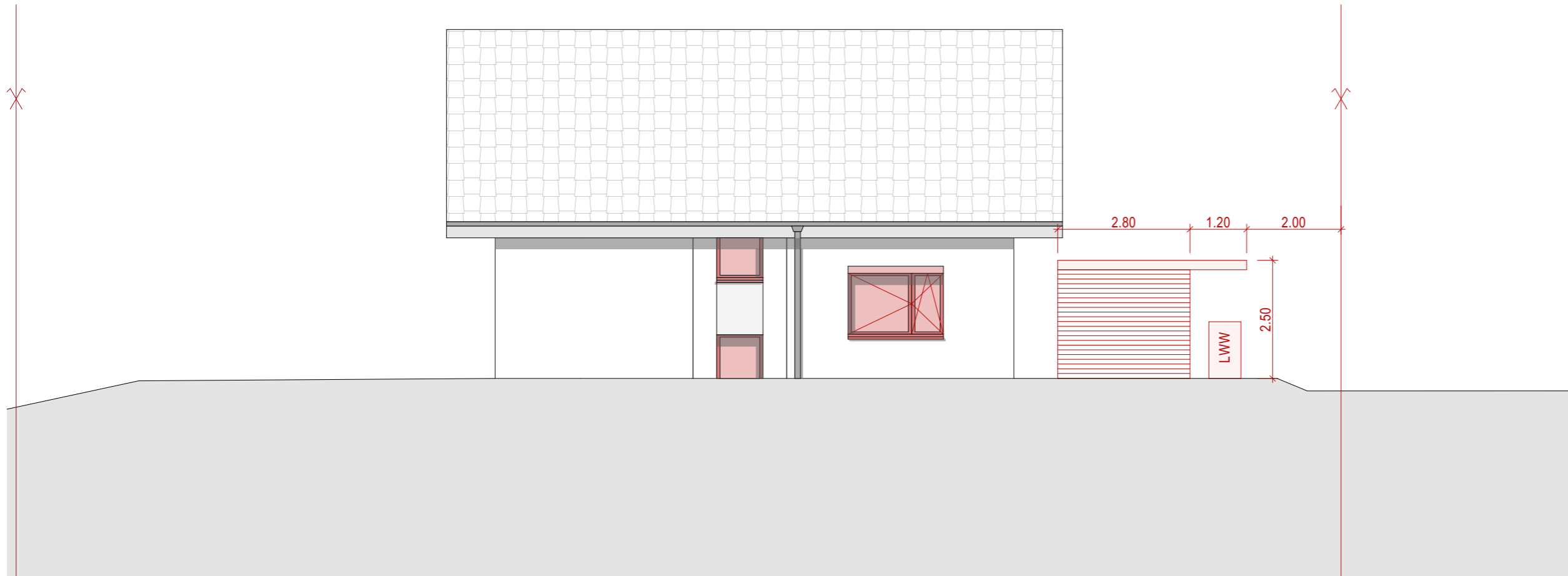
Legende



Bestehend
Abbruch
Neu



Westansicht

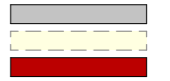


Ostansicht

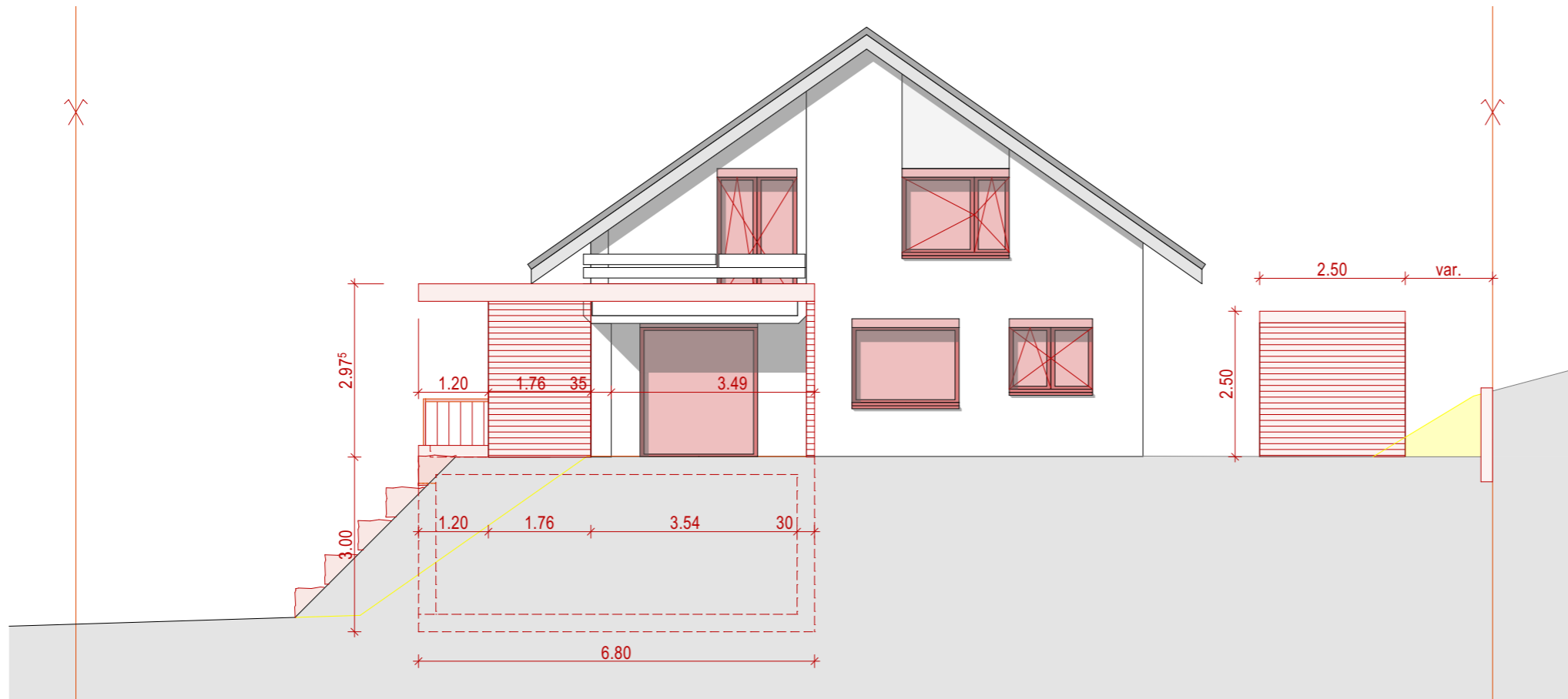
Umbau EFH Aemserstrasse 15

Andrea und Roger Wermelinger, Aemserstrasse 15, 6110 Wolhusen

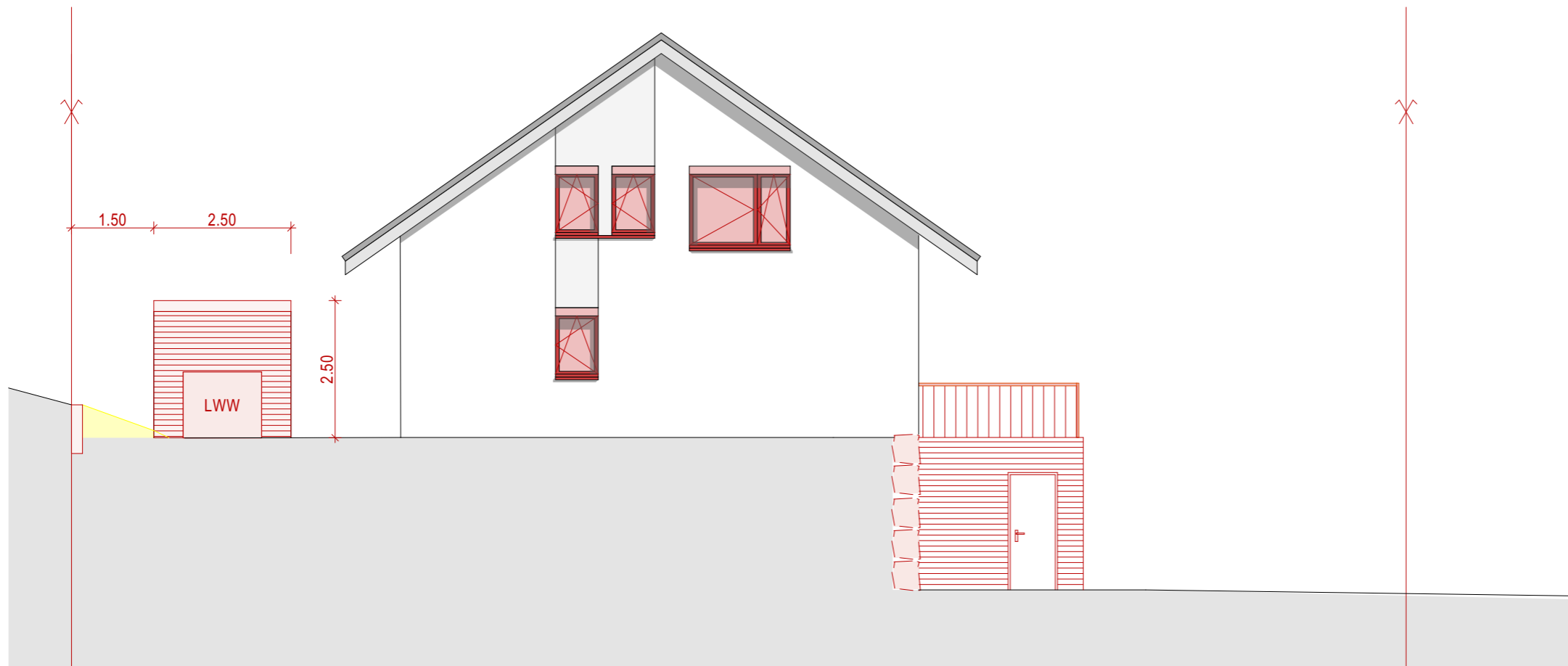
Legende



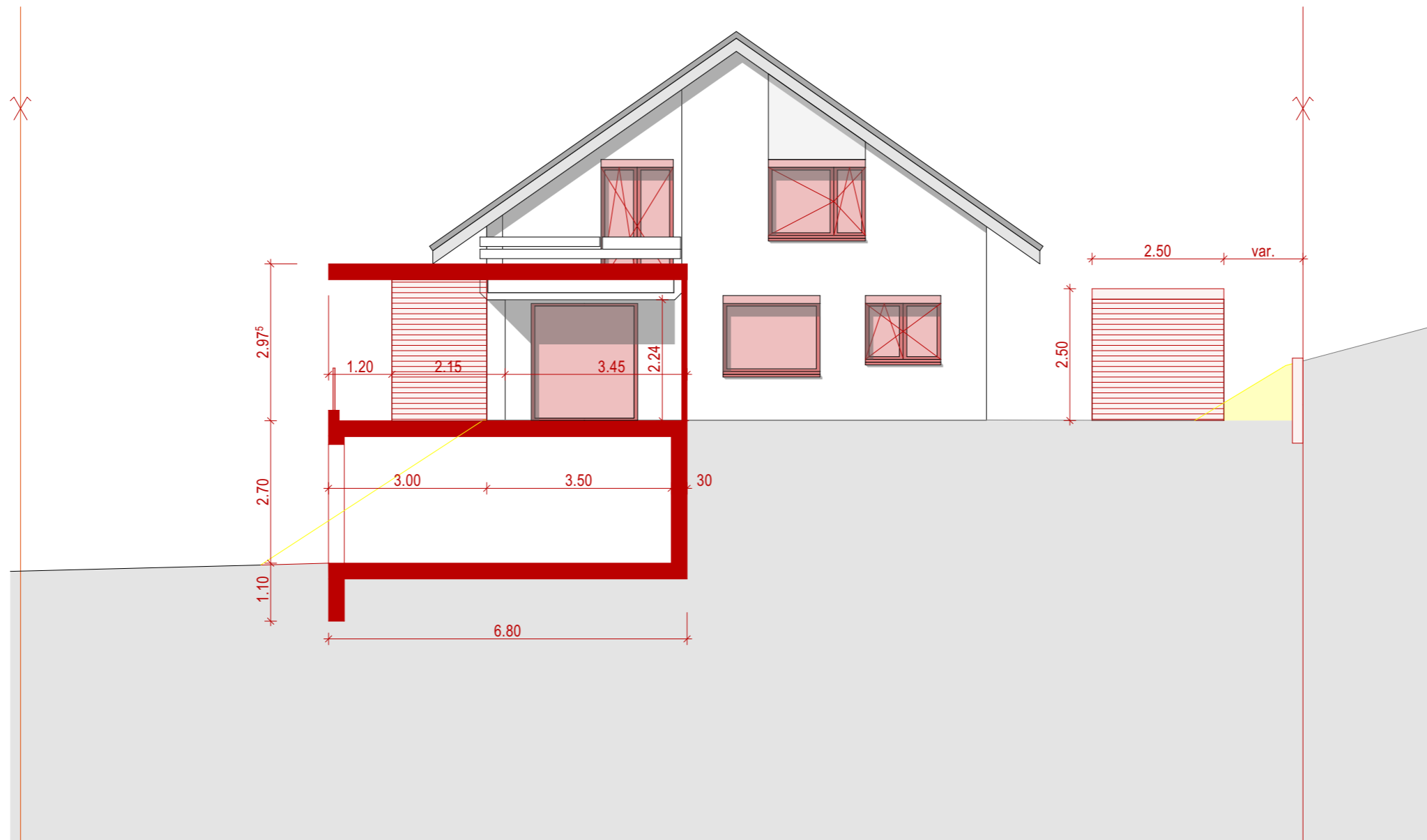
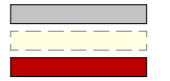
Bestehend
Abbruch
Neu



Südansicht



Nordansicht

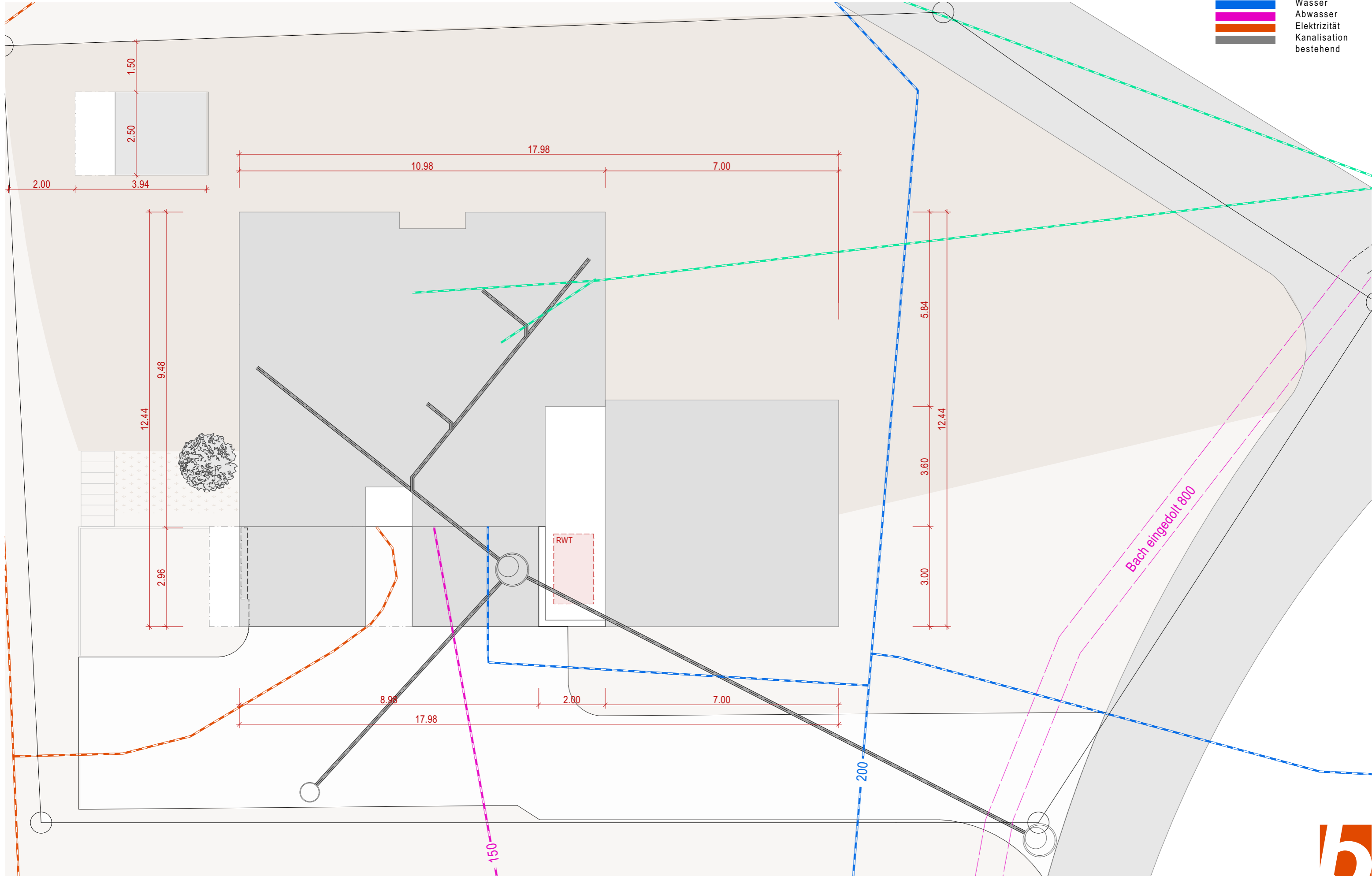


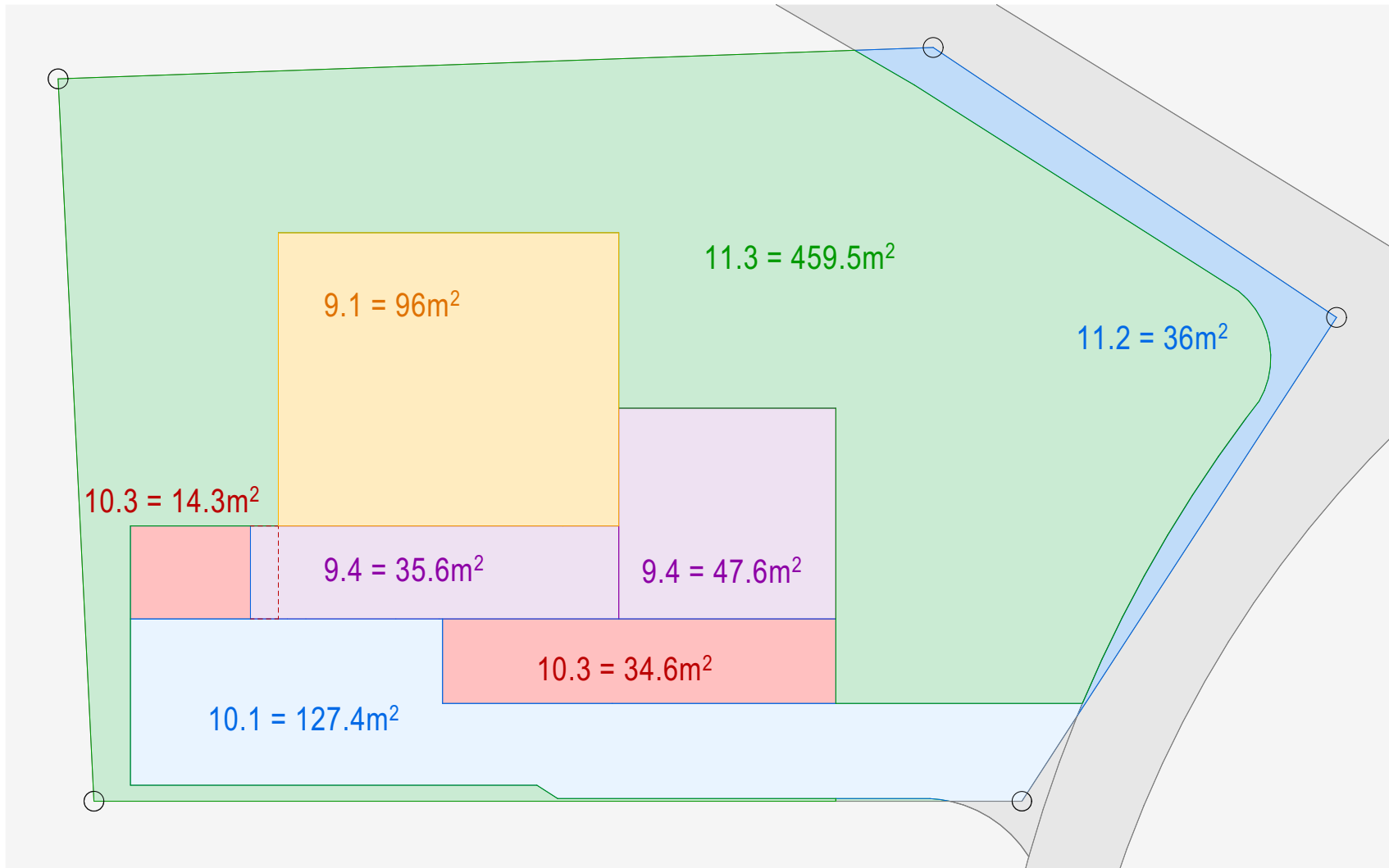
Umbau EFH Aemserestrasse 15

Andrea und Roger Wermelinger, Aemserestrasse 15, 6110 Wolhusen

Legende

- Kommunikation
- Wasser
- Abwasser
- Elektrizität
- Kanalisation bestehend



**Berechnung**

Grundflächen Gebäude
 $9.1 + 9.4 = \text{m}^2$
 $96 + 83.2 = 179.2\text{m}^2$

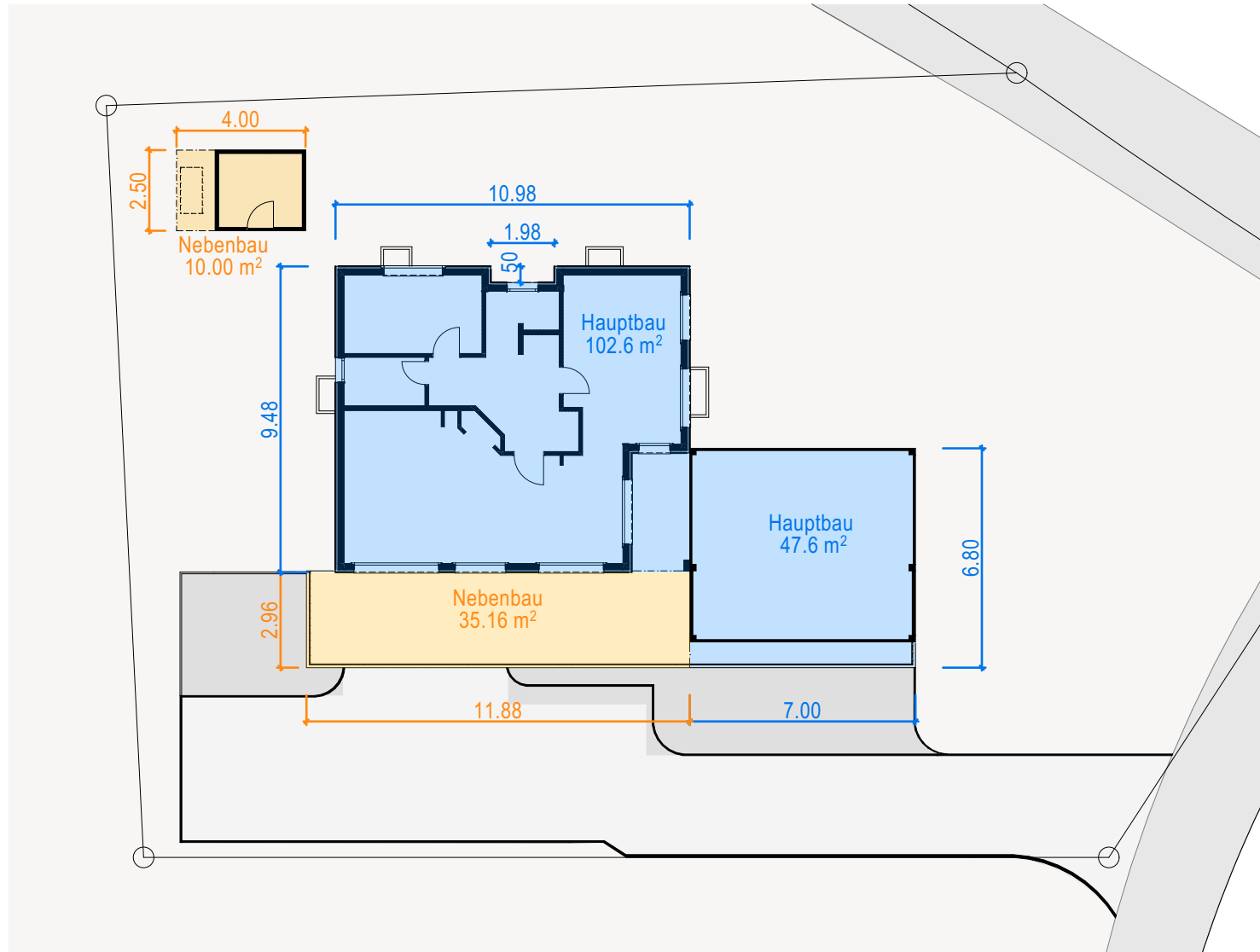
Übrige befestigte Flächen
 $10.1 + 10.3 = \text{m}^2$
 $127.4 + 48.9 = 176.3\text{m}^2$

Umgebungsflächen
 $11.2 + 11.3 = \text{m}^2$
 $36 + 459.5 = 495.5\text{m}^2$

Total Grundstücksfläche
 $179.2 + 176.3 + 495.5 = 851\text{m}^2$

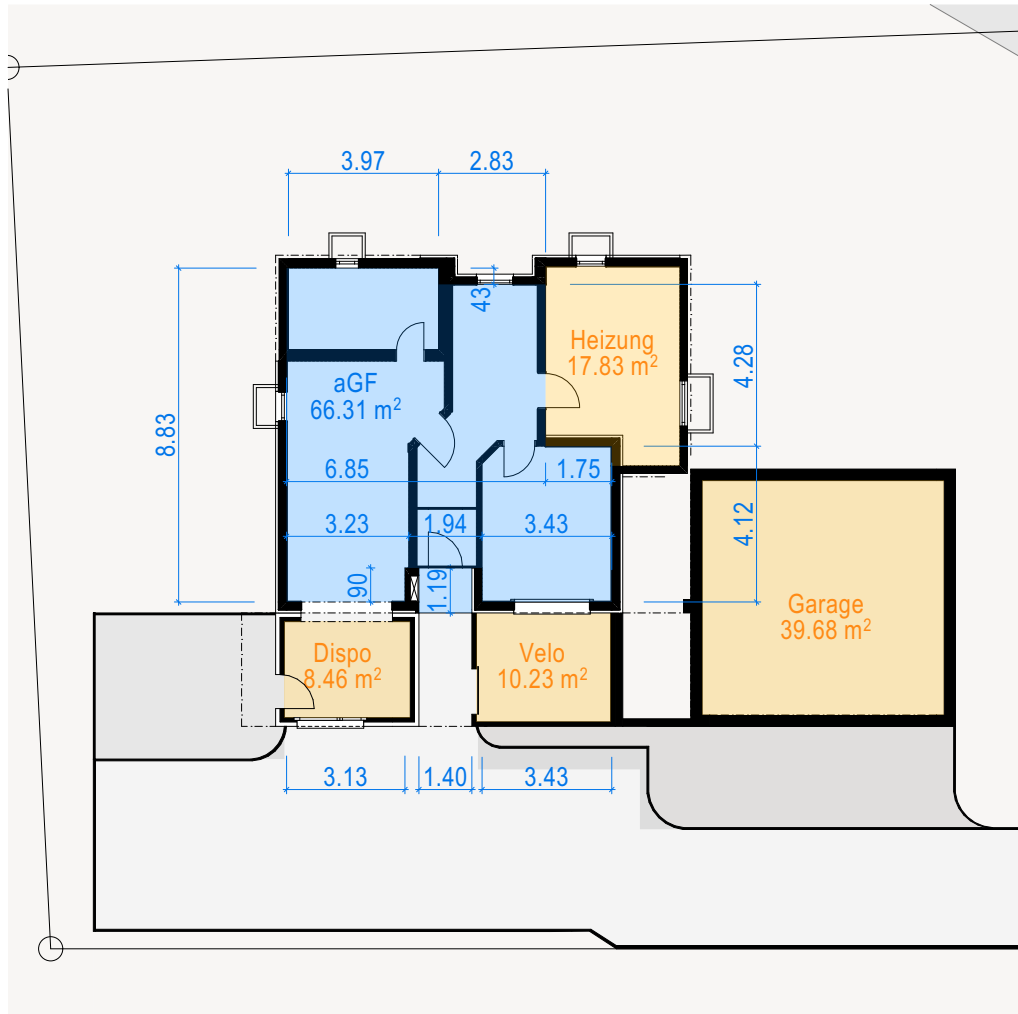
Umbau EFH Aemserstrasse 15

Andrea und Roger Wermelinger, Aemserstrasse 15, 6110 Wolhusen

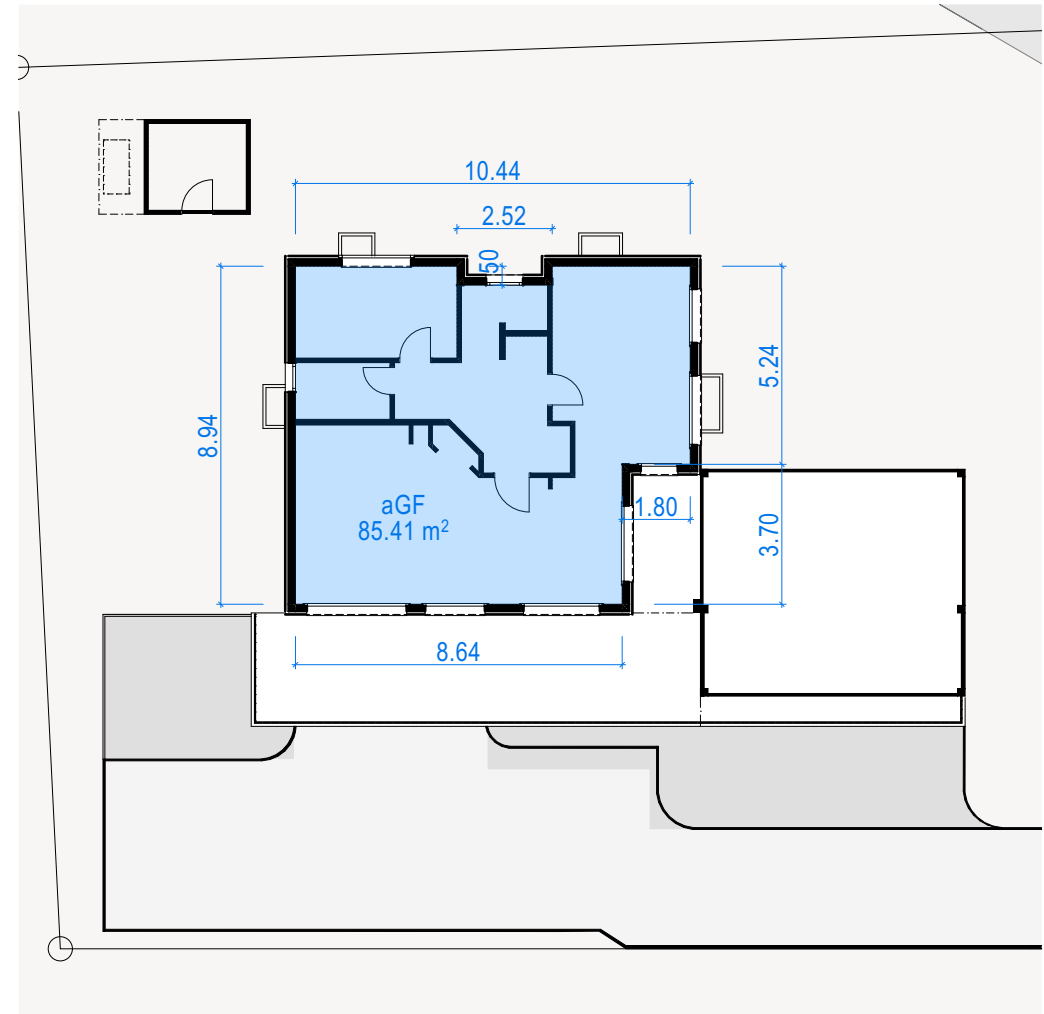


Umbau EFH Aemsererstrasse 15

Andrea und Roger Wermelinger, Aemsererstrasse 15, 6110 Wolhusen



Eingangsgeschoss

BerechnungaGF Eingangsgeschoss = 142.51 m²Garage / Velo / Dispo -58.37 m²Heizung -17.83 m²Total aGF EG = 66.31 m²aGF Wohngeschoss = 85.41 m²aGF Dachgeschoss = dito Wohngeschoss = 85.41 m²

Wohngeschoss

Legende

- anrechenbare Geschossfläche
- nicht anrechenbare Geschossfläche