

# neue Wohnflächenberechnung

Mst. 1:200 Gez. CI Dat. 03.09.2019 Rev. Form. A4



Grenzstrasse 3b, 6214 Schenkon  
 lbg@lbg-sursee.ch / www.lbg-sursee.ch

Telefonnummer 041 925 82 46  
 Faxnummer 041 925 82 40

**best. Wohnfläche: 128.60m<sup>2</sup>**

**max. neue Wohnfläche: 128.60m<sup>2</sup> + 30% = 167.18m<sup>2</sup>**

**Wohnflächen:**

Grundriss EG: 71.39m<sup>2</sup>  
 Grundriss OG: 71.39m<sup>2</sup>  
 Grundriss DG: 24.38m<sup>2</sup>

**Total: 167.16m<sup>2</sup>**

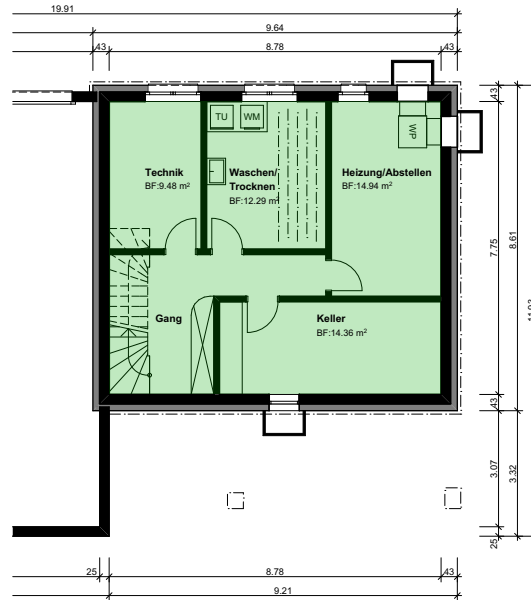
**best. Nebenfläche: 72.53m<sup>2</sup>**

**max. neue Nebenfläche: 72.53m<sup>2</sup> + 30% = 94.29m<sup>2</sup>**

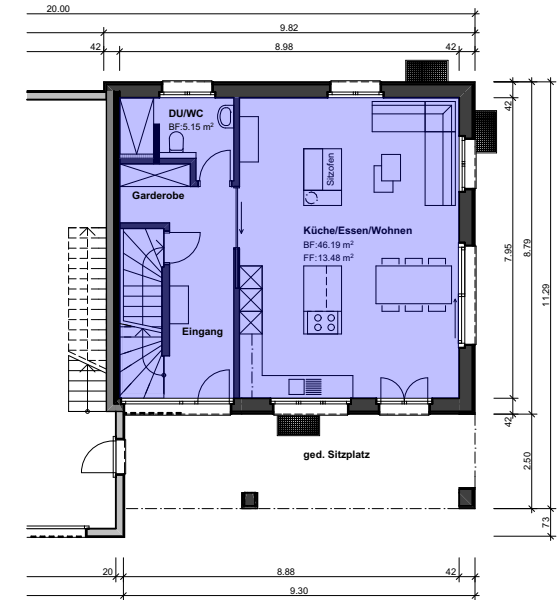
**Nebenfläche:**

Grundriss UG: 68.05m<sup>2</sup>  
 Grundriss DG: 13.31m<sup>2</sup>  
 12.01m<sup>2</sup>

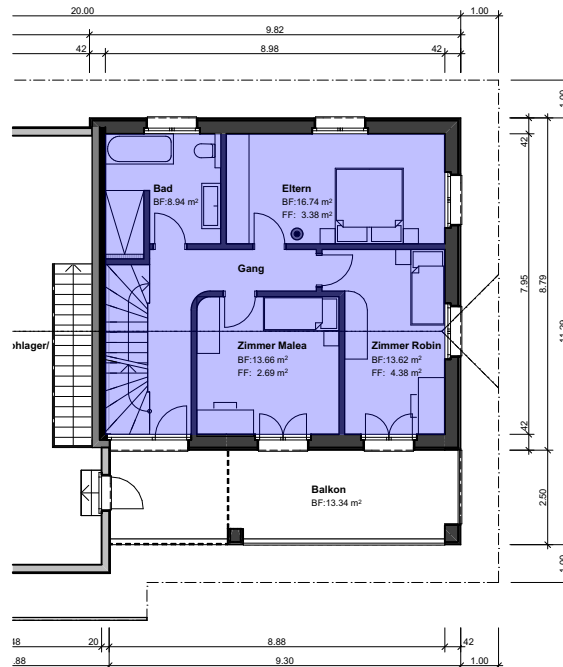
**Total: 93.37m<sup>2</sup>**



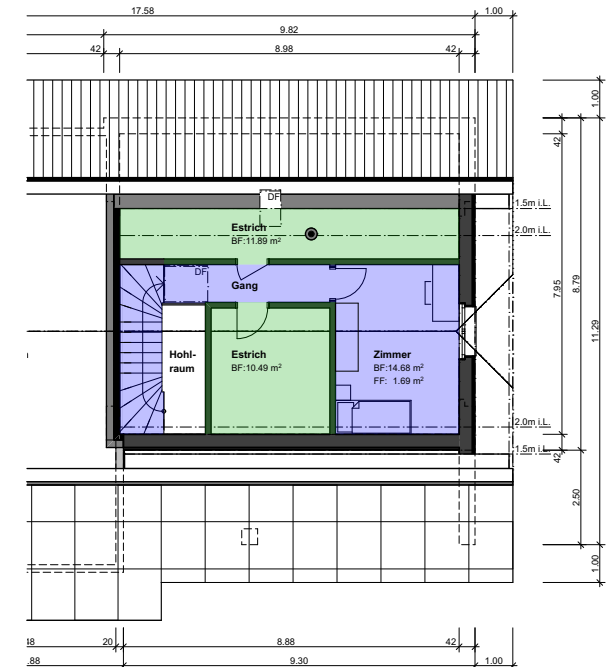
**Grundriss UG 68.05 m<sup>2</sup>**



**Grundriss EG 71.39 m<sup>2</sup>**



**Grundriss OG 71.39 m<sup>2</sup>**



**Grundriss DG 13.31 m<sup>2</sup> 24.38 m<sup>2</sup> 12.01 m<sup>2</sup>**